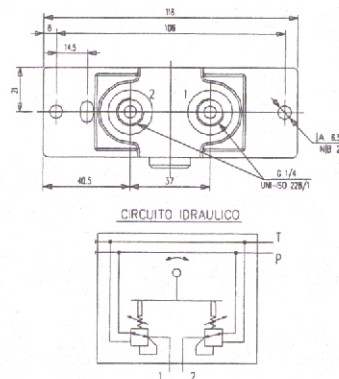
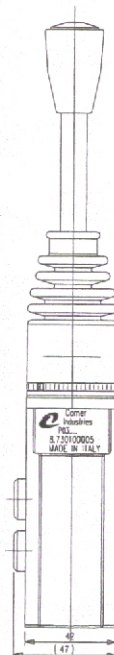
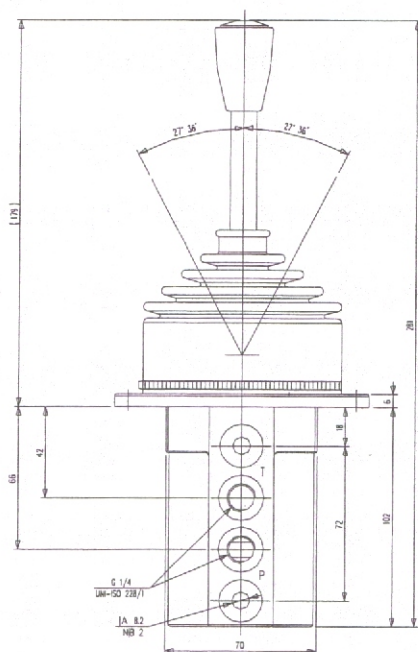




CODICE	DESCRIZIONE	FAMIGLIA
8.730100005	MANIP. SV10-B/01G-086Ax2	SV 10
8.730100006	MANIP. LEVA SV10-B/03G-086Ax2	SV 10
8.730100007	MANIP. PED. BASC. SVP500-B/01-P006Bx2	SVP 500
8.730100008	MANIP. PEDALE SV60-B/086C	SV 60
8.730100009	MANIP. 2 PEDALI SV40-B/086Cx2	SV 40
8.730100010	MANIP. 2 PEDALI SV40-B/068Cx2	SV 40
8.730100013	MANIP. SV10-B/10G-086Ax2	SV 10
8.730100014	MANIP. SVM400/01-B/01HB529-045-M086x4	SVM 400
8.730100015	MANIP. SV10-B/01G-086A-086A	SV 10

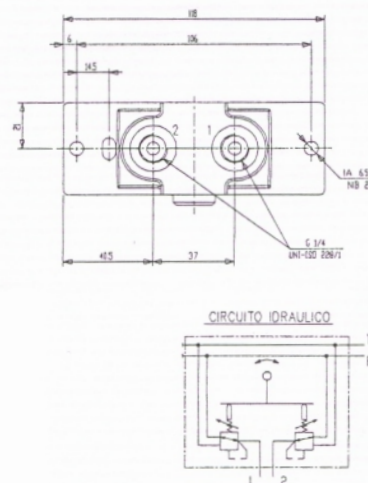
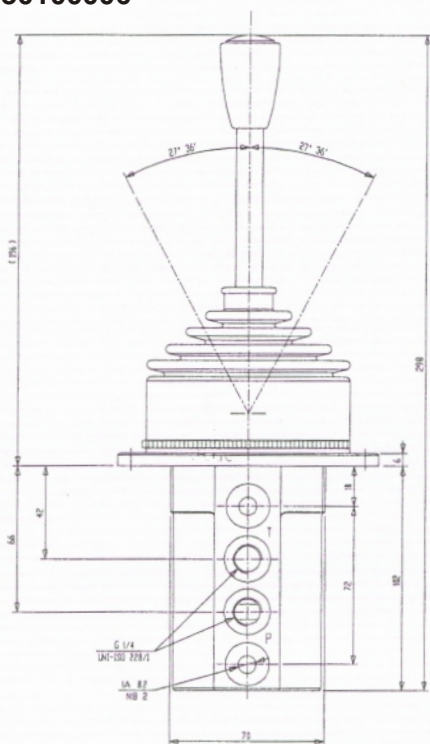
8.730100005/13 IN SOSTITUZIONE CON 8.730100015



CARATTERISTICHE TECNICHE

- Pressione minima = 30 bar (435.1 psi)
- Pressione massima = 100 bar (1451 psi)
- Contropressione massima = 3 bar (43.5 psi)
- Portata minima = 5 l/min
- Portata massima = 20 l/min
- Fluido idraulico = olio minerale
- Viscosità cinematica = 12-400 (mm²/s)
- Temp. di esercizio = -10/+80°C
- Temp. ambiente = -40/+60°C
- Contaminazione ammessa = 15/12 (ISO/DIS 4406)
- Isteresi massima = 0.5 bar (7.25 psi)
- Fuga interna (30 bar) = 3-6 cm³/min

8.730100006



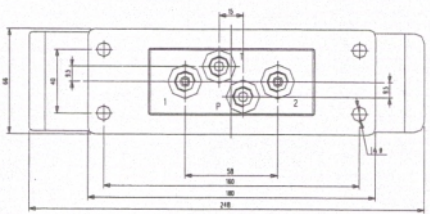
CARATTERISTICHE TECNICHE

- Pressione minima = 30 bar (435.1 psi)
- Pressione massima = 100 bar (1451 psi)
- Contropressione massima = 3 bar (43.5 psi)
- Portata minima = 5 l/min
- Portata massima = 20 l/min
- Fluido idraulico = olio minerale
- Viscosità cinematica = 12-400 (mm²/s)
- Temp. di esercizio = -10/+80°C
- Temp. ambiente = -40/+60°C
- Contaminazione ammessa = 15/12 (ISO/DIS 4406)
- Isteresi massima = 0.5 bar (7.25 psi)
- Fuga interna (30 bar) = 3-6 cm³/min

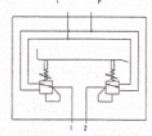
SERVOCOMANDI IDRAULICI

CARATTERISTICHE TECNICHE

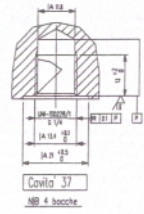
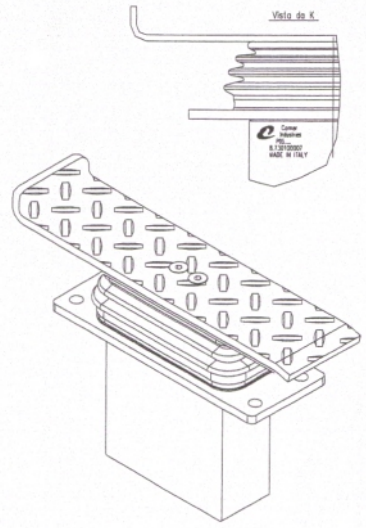
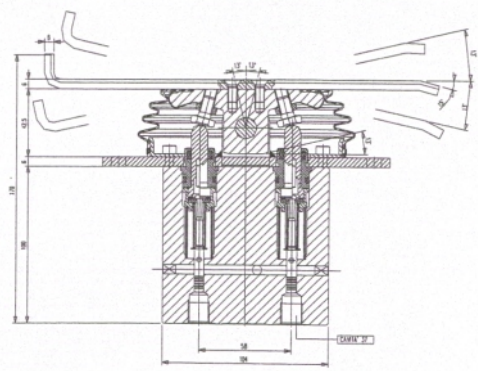
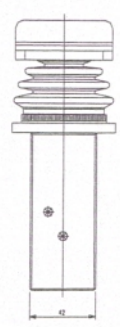
- Pressione minima = 30 bar (435.1 psi)
- Pressione massima = 100 bar(1451 psi)
- Contropressione massima = 3 bar(43.5 psi)
- Portata minima = 5 l/min
- Portata massima = 20 l/min
- Fluido idraulico = olio minerale
- Viscosità cinematica = 12-400 (mm²/s)
- Temp. di esercizio = -10/+80°C
- Temp. ambiente = -40/+60°C
- Contaminazione ammessa = 15/12 (ISO/DIS 4406)
- Isteresi massima = 0.5 bar (7.25 psi)
- Fuga interna (30 bar) = 3-6 cm³/min



CIRCUITO IDRAULICO

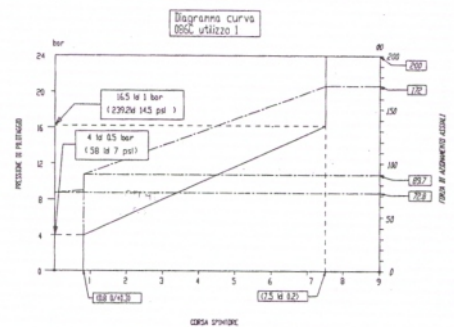
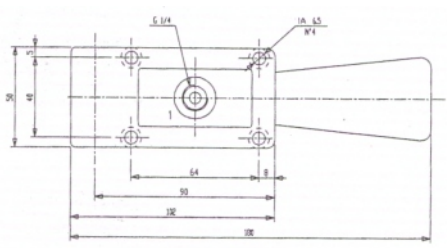


8.730100007

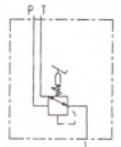


Cavità 37
NR. 4 bocche

8.730100008



CIRCUITO IDRAULICO



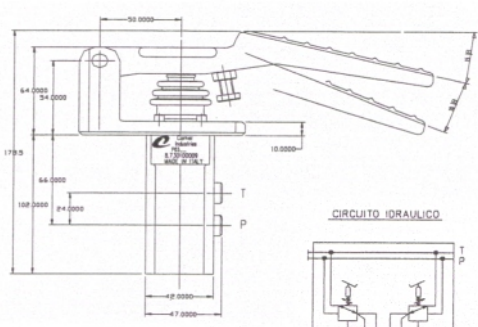
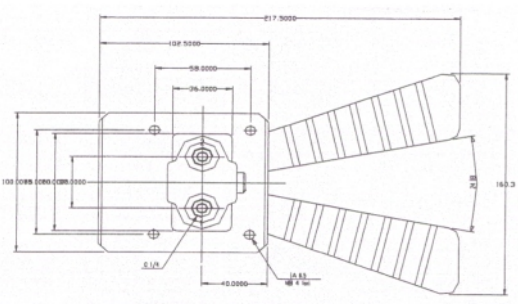
CARATTERISTICHE TECNICHE

- Pressione minima = 30 bar (435.1 psi)
- Pressione massima = 100 bar(1451 psi)
- Contropressione massima = 3 bar(43.5 psi)
- Portata minima = 5 l/min
- Portata massima = 20 l/min
- Fluido idraulico = olio minerale
- Viscosità cinematica = 12-400 (mm²/s)
- Temp. di esercizio = -10/+80°C
- Temp. ambiente = -40/+60°C
- Contaminazione ammessa = 15/12 (ISO/DIS 4406)
- Isteresi massima = 0.5 bar (7.25 psi)
- Fuga interna (30 bar) = 3-6 cm³/min

8.730100009

CARATTERISTICHE TECNICHE

- Pressione minima = 30 bar (435.1 psi)
- Pressione massima = 100 bar(1451 psi)
- Contropressione massima = 3 bar(43.5 psi)
- Portata minima = 5 l/min
- Portata massima = 20 l/min
- Fluido idraulico = olio minerale
- Viscosità cinematica = 12-400 (mm²/s)
- Temp. di esercizio = -10/+80°C
- Temp. ambiente = -40/+60°C
- Contaminazione ammessa = 15/12 (ISO/DIS 4406)
- Isteresi massima = 0.5 bar (7.25 psi)
- Fuga interna (30 bar) = 3-6 cm³/min



CIRCUITO IDRAULICO

